

5 A student is deriving an equation for the total resistance of resistors in series.

She writes the following steps but does not justify them.

Step 1 $V = V_1 + V_2$

Step 2 *but* $V = IR$

Step 3 *so* $IR = I_1R_1 + I_2R_2$

Step 4 *but* $I = I_1 = I_2$

Step 5 *Therefore* $R = R_1 + R_2$

Which step is justified using conservation of charge?

- A Step 1
- B Step 2
- C Step 3
- D Step 4

(Total for Question 5 = 1 mark)



- 7 A series circuit consists of two resistors with resistances R_1 and R_2 and a battery of potential difference V .

Which of the following gives the potential difference across the resistor with resistance R_2 ?

- A $\frac{R_1}{R_2} V$
- B $\frac{R_2}{R_1} V$
- C $\frac{R_1}{R_1 + R_2} V$
- D $\frac{R_2}{R_1 + R_2} V$

(Total for Question 7 = 1 mark)

- 8 A light dependent resistor and a negative temperature coefficient thermistor are connected in series.

Which of the following combinations of illumination and temperature will result in the highest combined resistance?

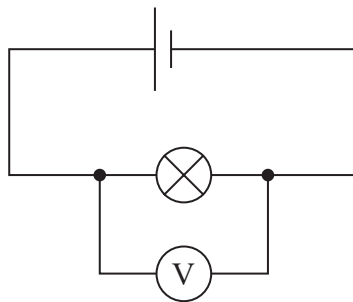
- A dark and cold
- B dark and hot
- C light and cold
- D light and hot

(Total for Question 8 = 1 mark)



9 A torch uses a 1.5 V dry cell. Over time, the light intensity produced by the torch decreases as the cell 'goes flat'.

(a) Student A sets up the following circuit in an attempt to measure the e.m.f. of a cell.



Explain why the voltmeter reading will **not** be the e.m.f. of the cell.

(2)

.....

.....

.....

.....

DO NOT WRITE IN THIS AREA

DO NOT WRITE IN THIS AREA

DO NOT WRITE IN THIS AREA



DO NOT WRITE IN THIS AREA

DO NOT WRITE IN THIS AREA

DO NOT WRITE IN THIS AREA

(b) Student B correctly determined the e.m.f. of an unused cell as 1.63 V and its internal resistance as 1.15 Ω .

He repeated this after the cell had been used for several weeks. When a voltmeter was connected directly across the used cell, the reading was 1.36 V.

A bulb of resistance 5.92 Ω was then connected across the used cell and the reading fell to 0.84 V.

Student A suggests that the cell goes flat as it is used because the e.m.f. decreases. Student B suggests it is because the internal resistance increases.

Determine whether either student is correct about the changes in the cell as it goes flat.

(5)

.....

.....

.....

.....

.....

.....

.....

.....

.....

.....

.....

.....

.....

.....

.....

.....

.....

.....

.....

.....

.....

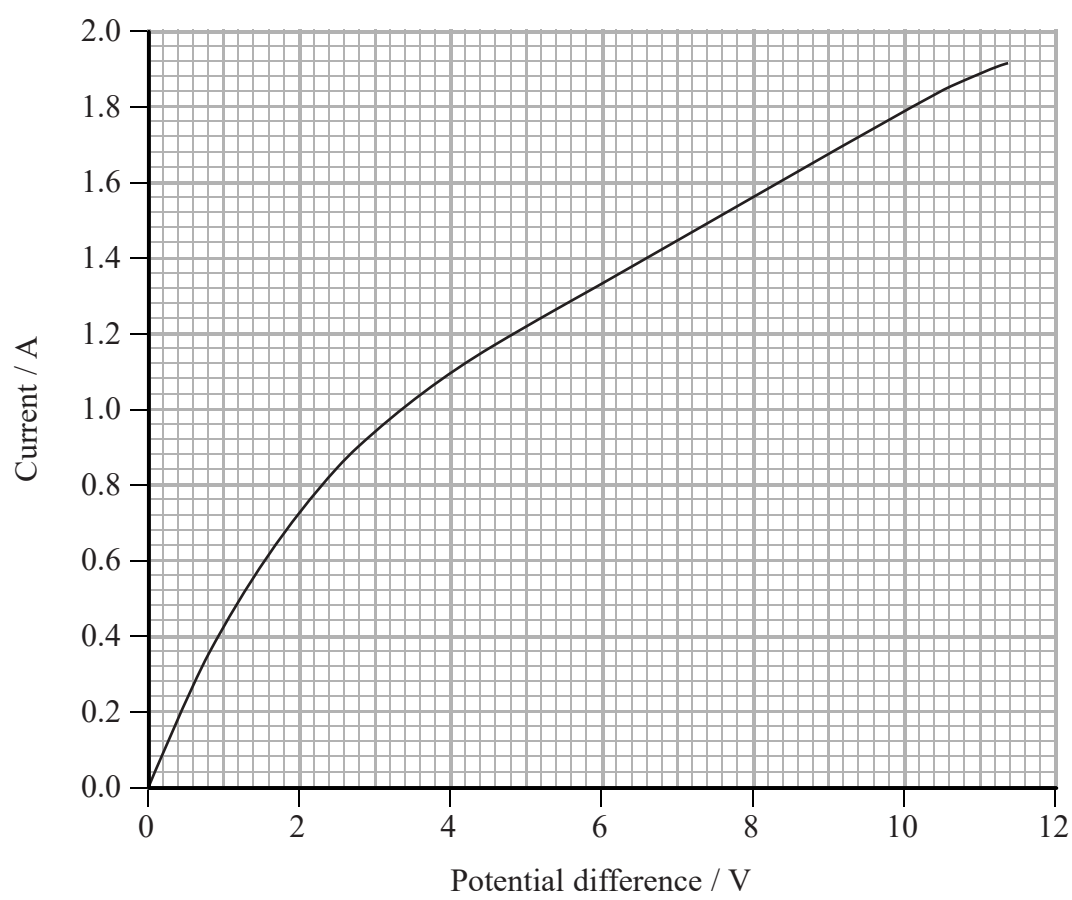
.....

.....

(Total for Question 9 = 7 marks)



14 The graph shows how the current through a filament bulb varies with the potential difference across the bulb.



(a) Determine the resistance of the filament bulb when the potential difference is 7.0 V.

(2)

.....

.....

.....

.....

Resistance =



